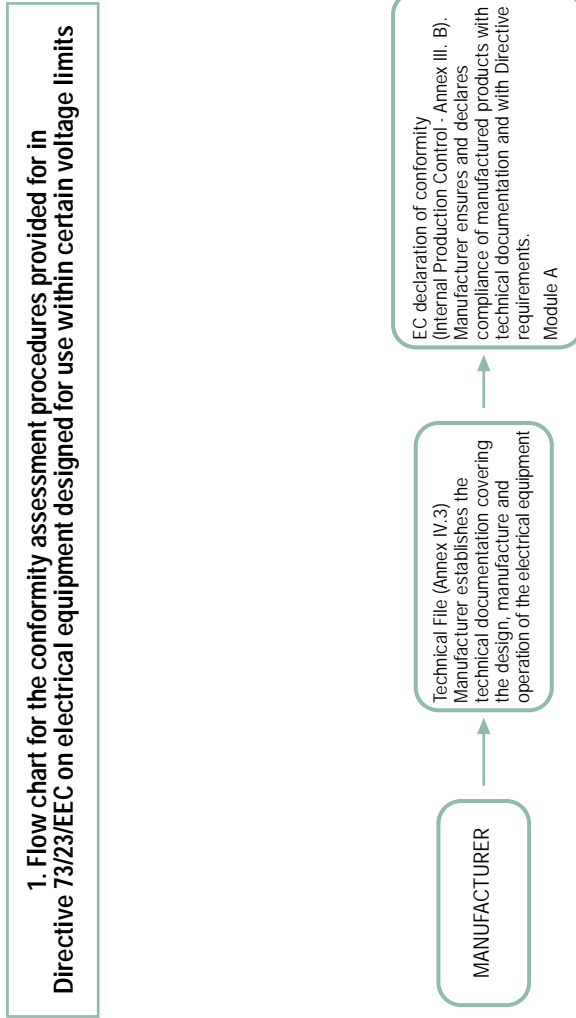


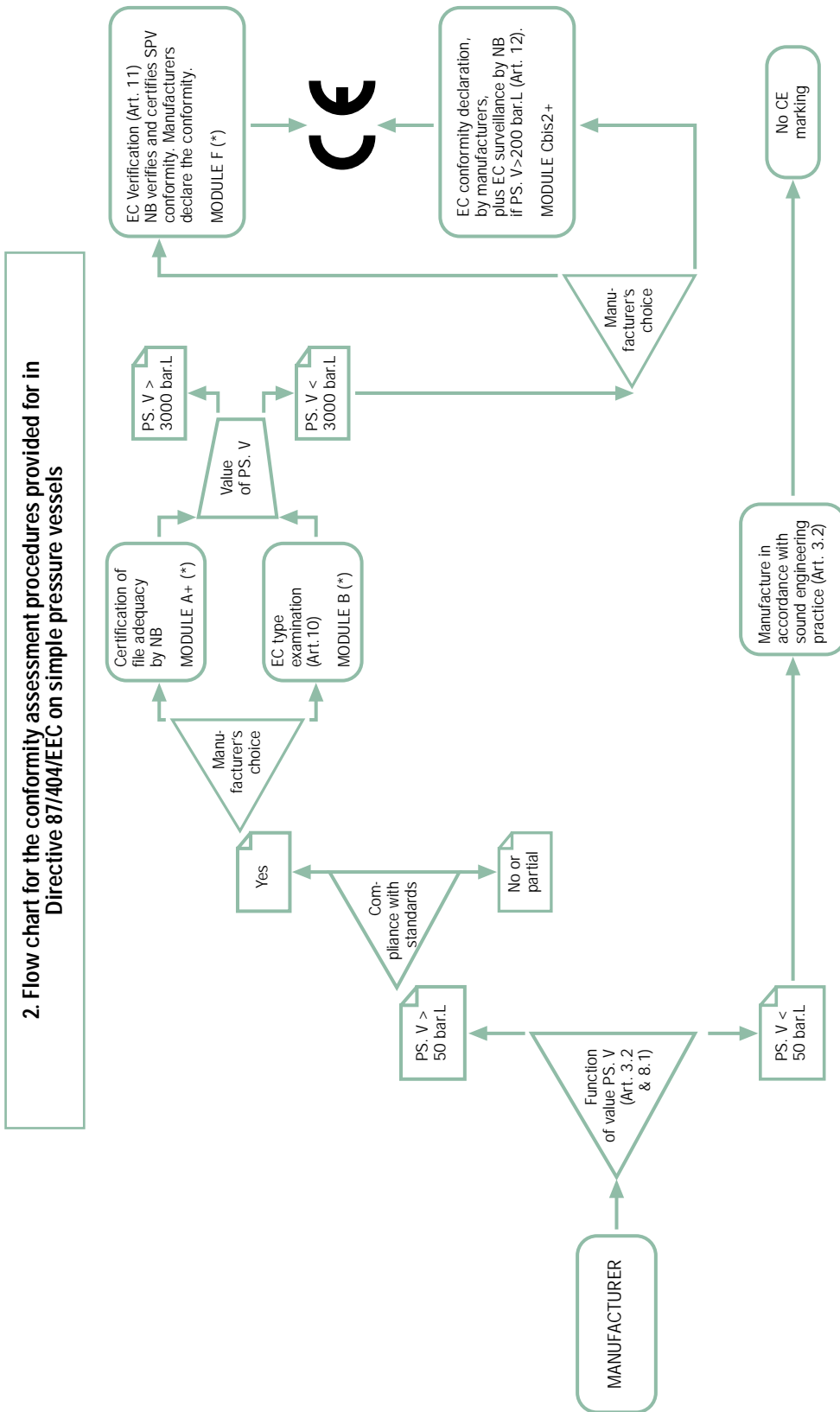
Annex 8

Flow chart presentation of conformity assessment procedures as provided for by the directives

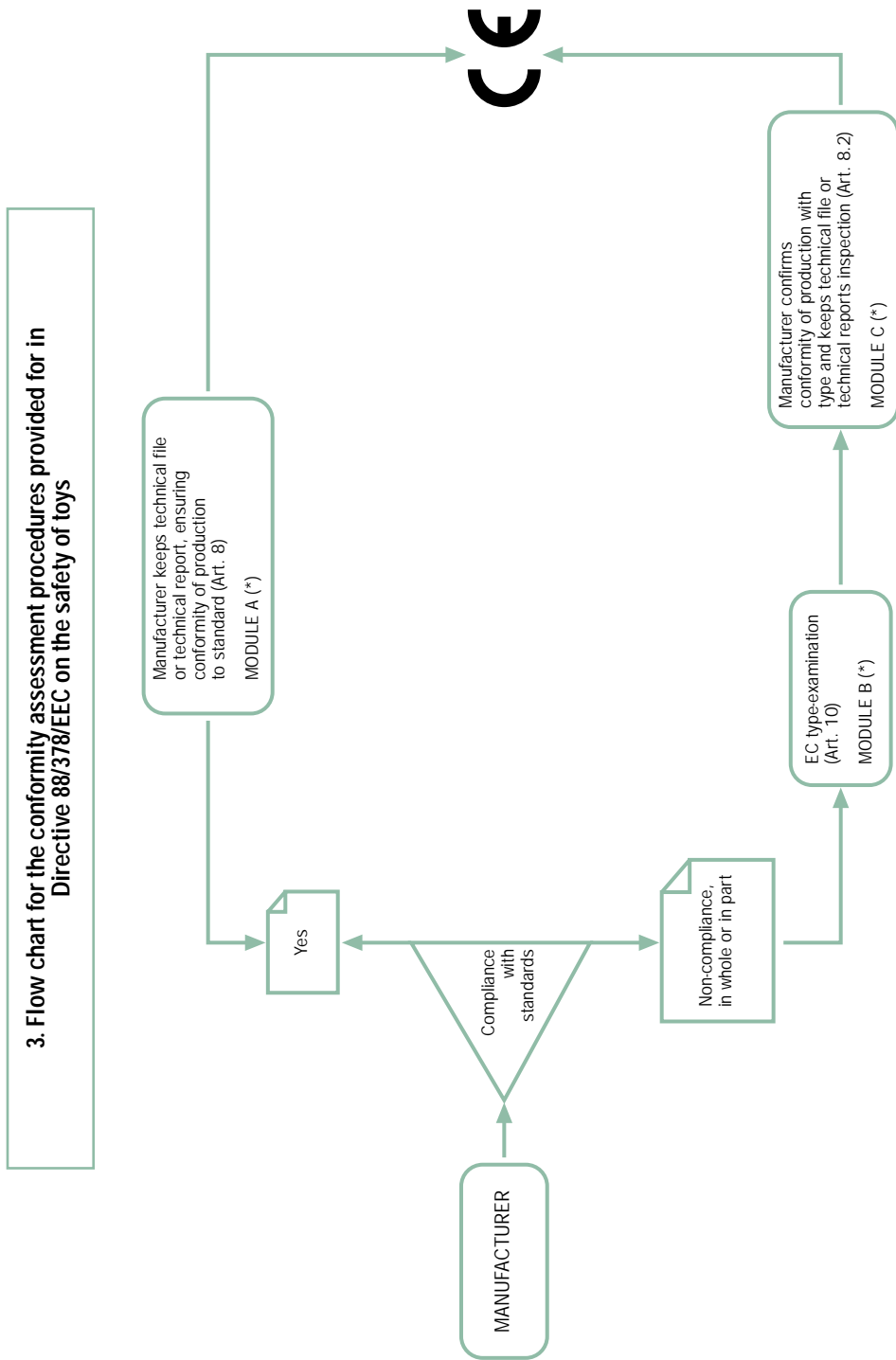
I New Approach directives	
1.	Low voltage equipment (73/23/EEC, amendment 93/68/EEC)
2.	Simple pressure vessels (87/404/EEC, amendments 90/488/EEC and 93/68/EEC)
3.	Toys (88/378/EEC, amendment 93/68/EEC)
4.	Electromagnetic compatibility (89/336/EEC, amendments 92/31/EEC and 93/68/EEC)
5.	Machinery (98/37/EC, amendment 98/79/EC)
6.	Personal protective equipment (89/686/EEC, amendments 93/68/EEC, 93/95/EEC and 96/58/EC)
7.	Non-automatic weighing instruments (90/384/EEC, amendment 93/68/EEC)
8.	Active implantable medical devices (90/385/EEC, amendments 93/42/EEC and 93/68/EEC)
9.	Gas appliances (90/396/EEC, amendment 93/68/EEC)
10.	Hot water boilers (92/42/EEC, amendment 93/68/EEC)
11.	Civil explosives (93/15/EEC)
12.	Medical devices (93/42/EEC, amendment 98/79/EC)
13.	Potentially explosive atmospheres (94/9/EC)
14.	Recreational craft (94/25/EC)
15.	Lifts (95/16/EC)
16.	Refrigeration appliances (96/57/EC)
17.	Pressure equipment (97/23/EC)
18.	Telecommunications terminal equipment (98/13/EC)
19.	<i>In vitro</i> diagnostic medical devices (98/79/EC)
20.	Radio and telecommunications terminal equipment (99/5/EC)
II Directive based on the principles of the Global Approach, but which does not provide for the CE marking	
21.	Marine equipment (96/98/EC)



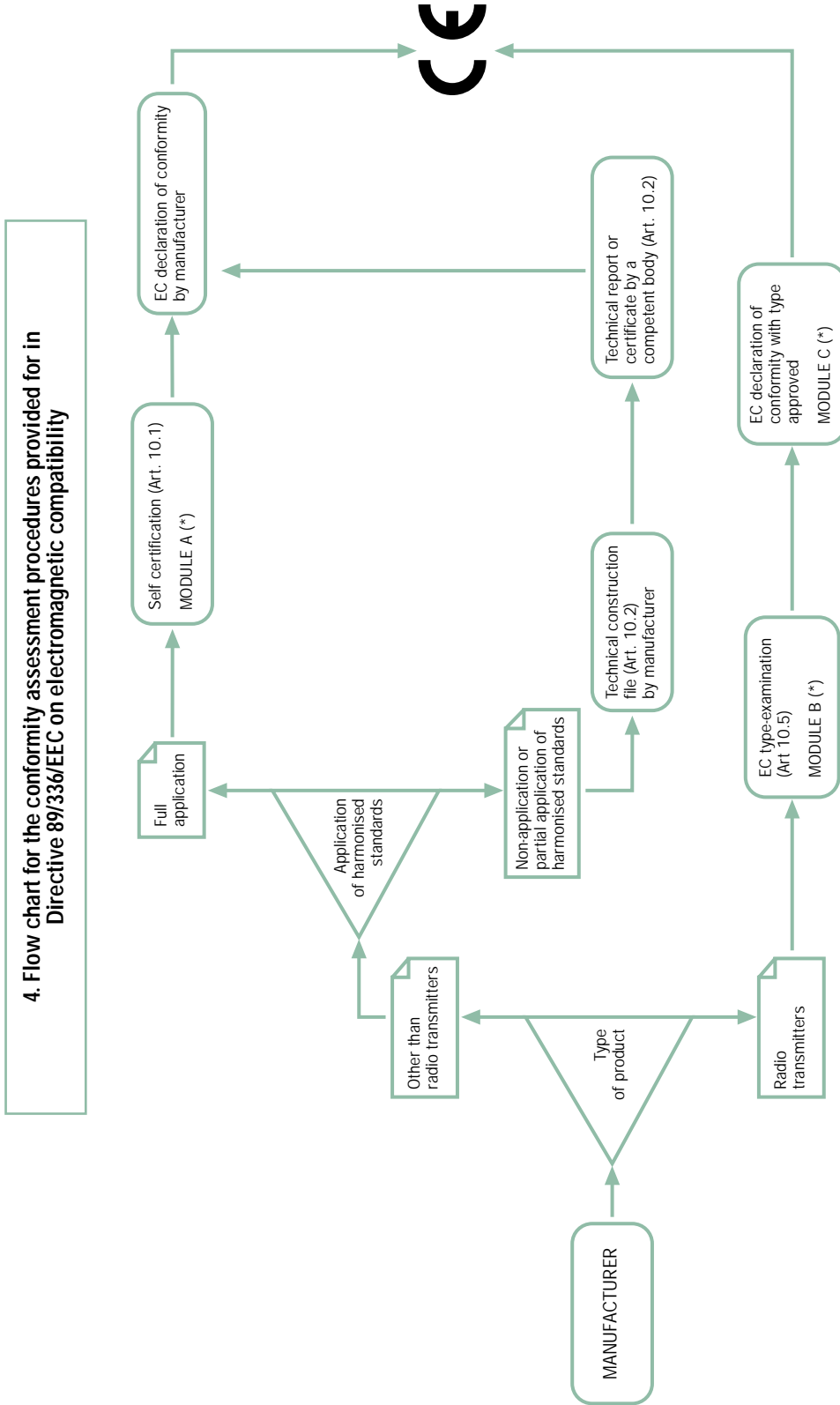
NB: In the event of a challenge the manufacturer may submit a 'report by a notified body' on the conformity of the equipment with the safety objectives (Article 8.2).



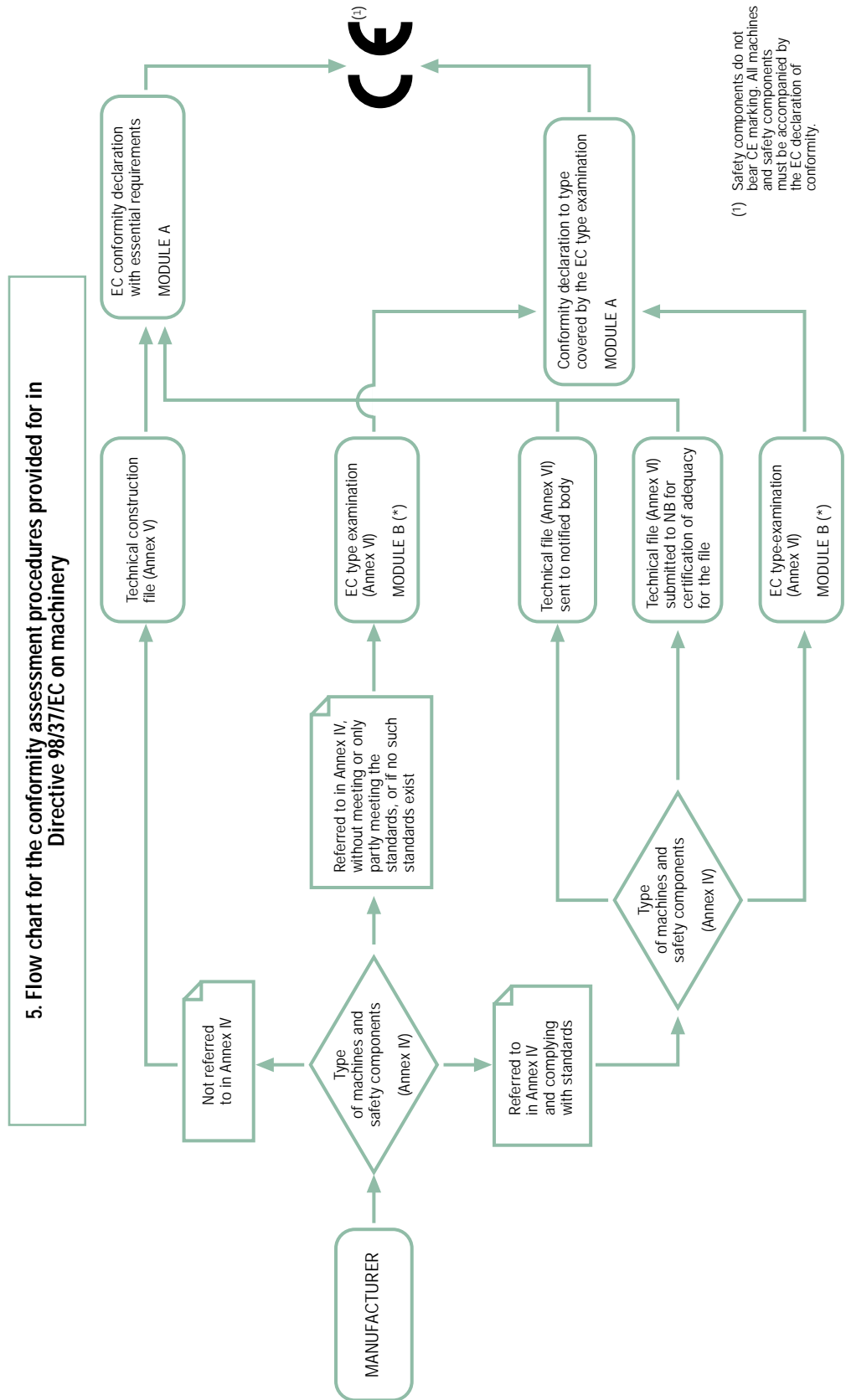
(*) These procedures were approved before the adoption of Council Decision 90/683/EEC (as amended by Decision 93/465/EEC) on conformity assessment procedures (modules). Their provisions may therefore not be identical to those of the modules.

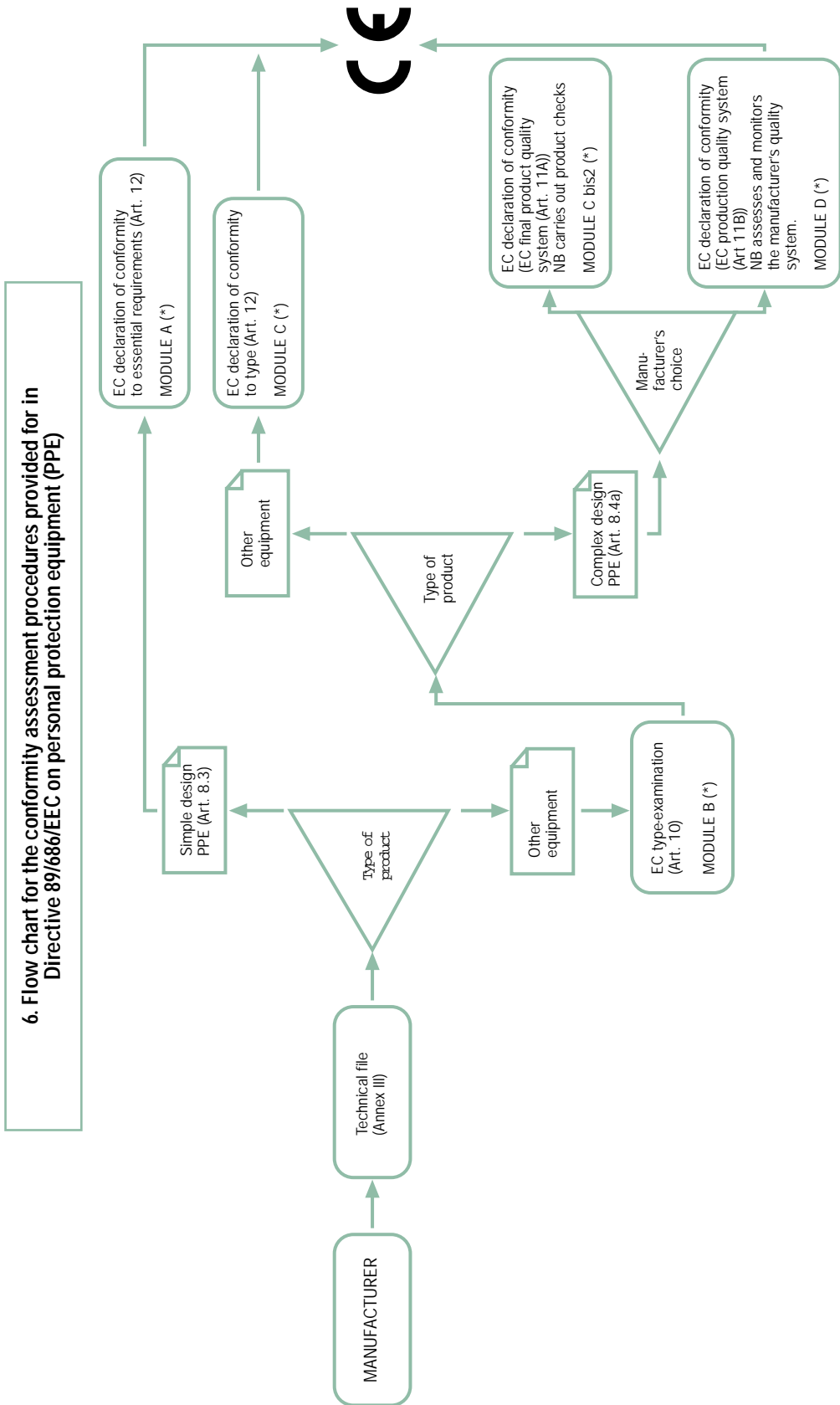


(*) These procedures were approved before the adoption of Council Decision 90/683/EEC (as amended by Decision 93/465/EEC) on conformity assessment procedures (modules). Their provisions may therefore not be identical to those of the modules.

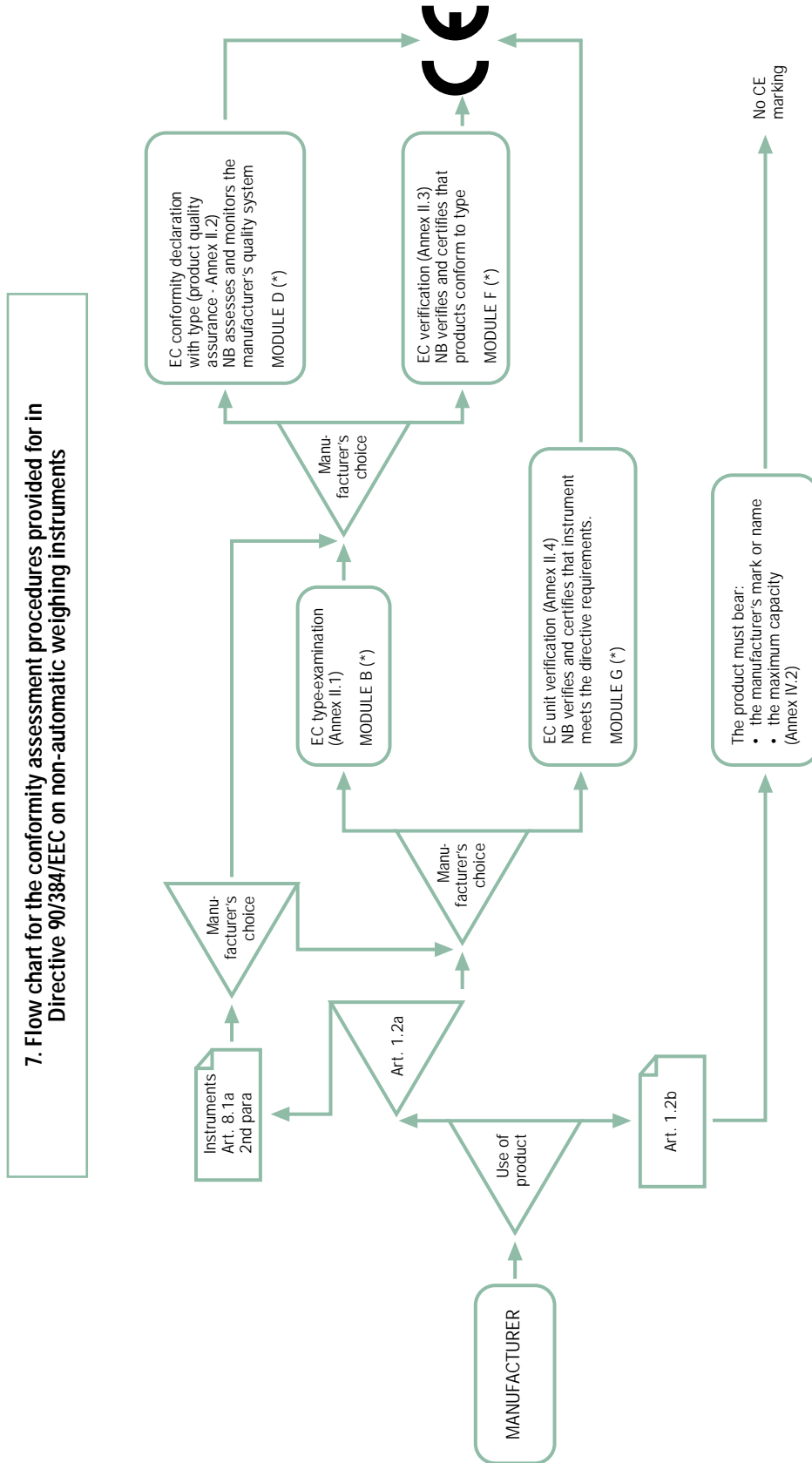


(*) These procedures were approved before the adoption of Council Decision 90/683/EEC (as amended by Decision 93/465/EEC) on conformity assessment procedures (modules). Their provisions may therefore not be identical to those of the modules.

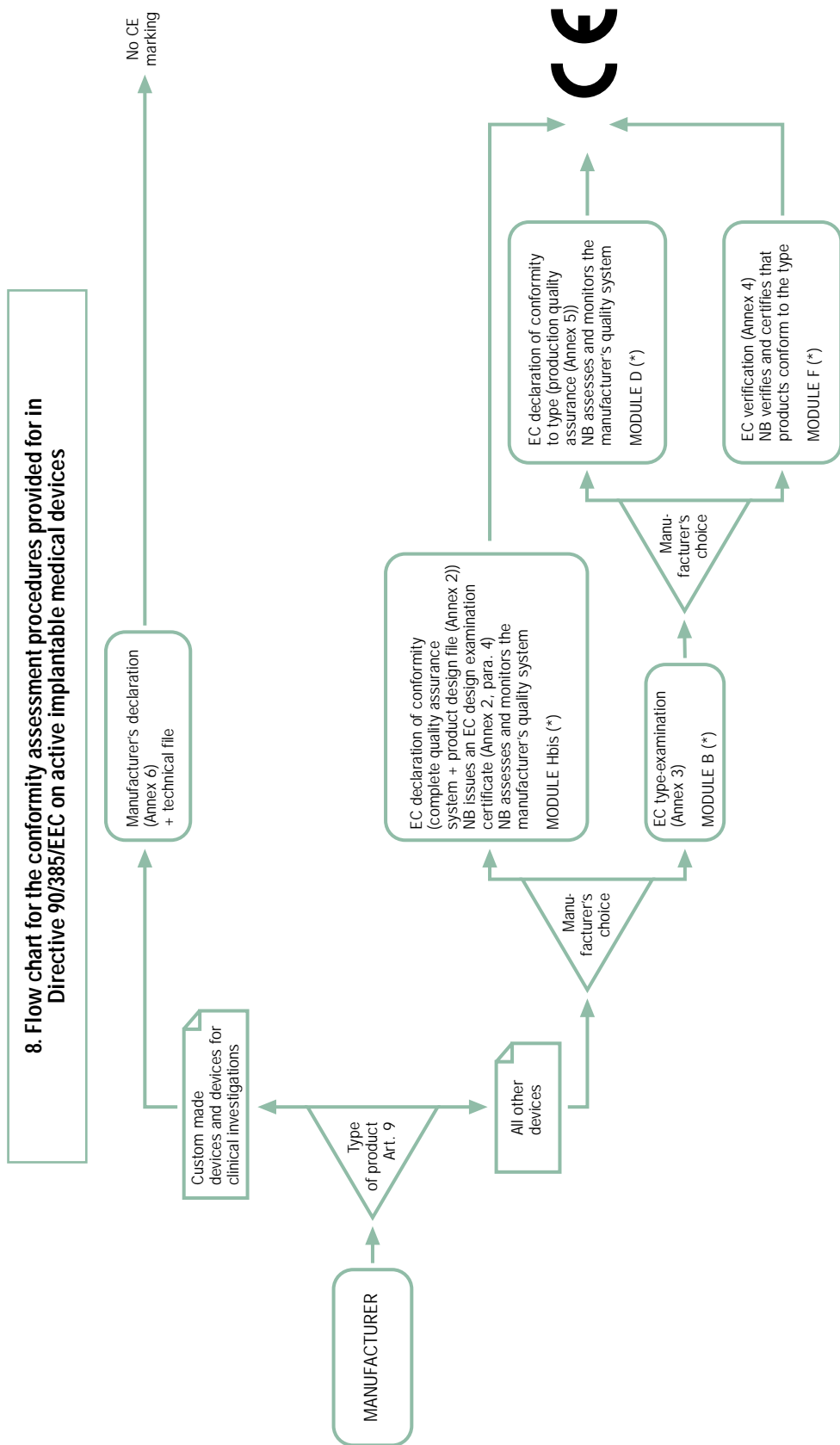




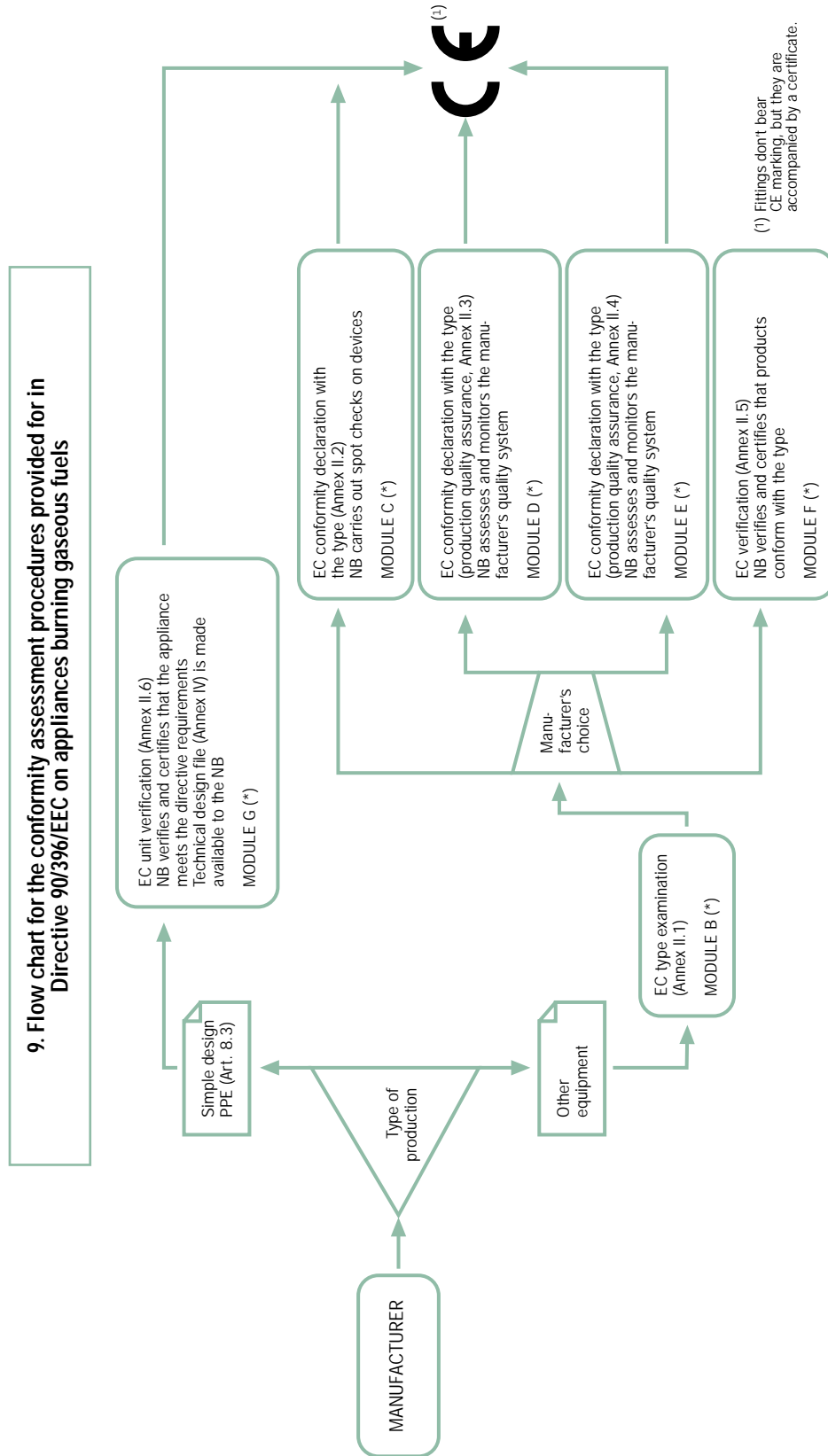
(*) These procedures were approved before the adoption of Council Decision 90/683/EEC (as amended by Decision 93/465/EEC) on conformity assessment procedures (modules). Their provisions may therefore not be identical to those of the modules.



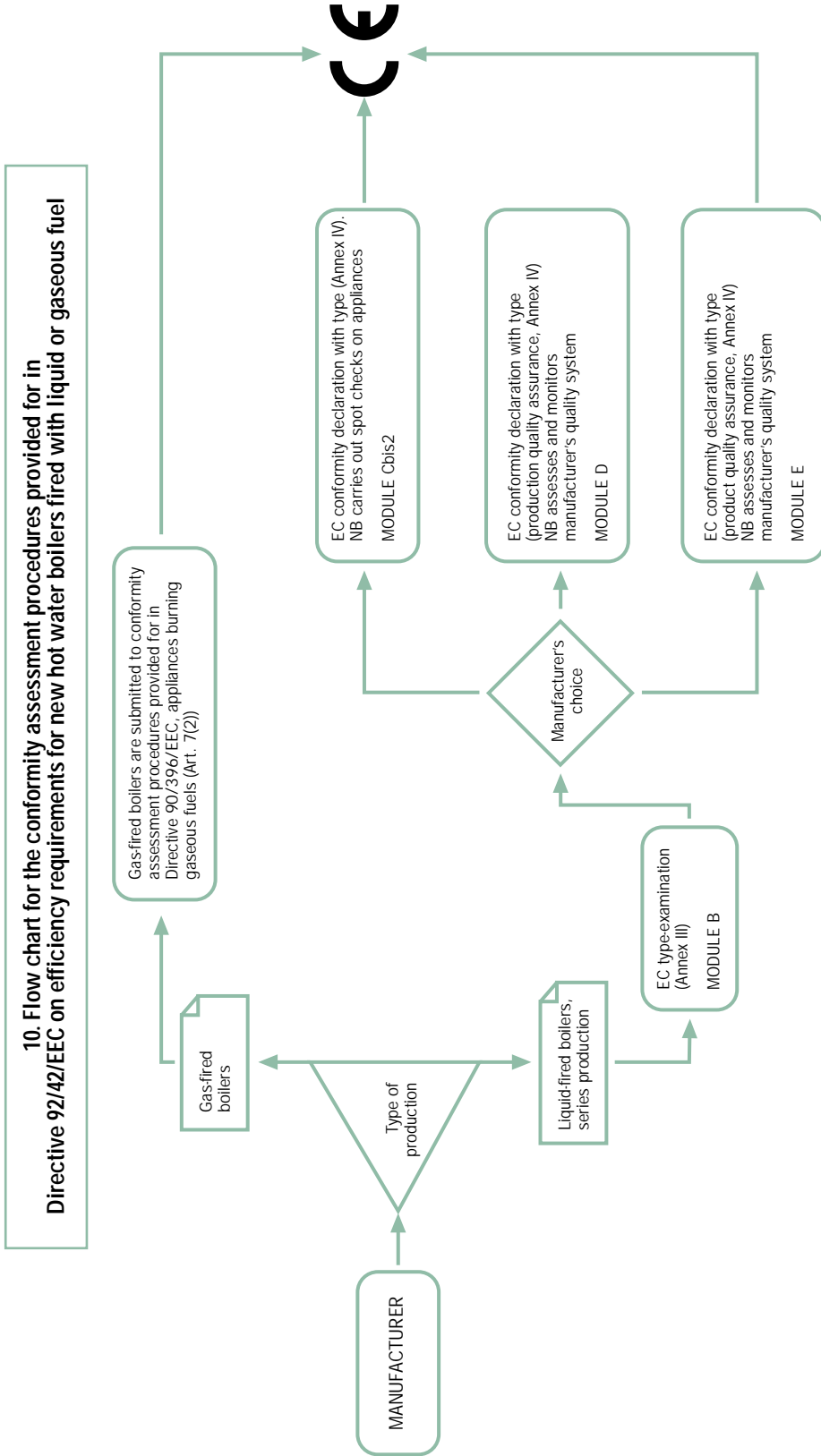
(*) These procedures were approved before the adoption of Council Decision 90/683/EEC (as amended by Decision 93/465/EEC) on conformity assessment procedures (modules). Their provisions may therefore not be identical to those of the modules.



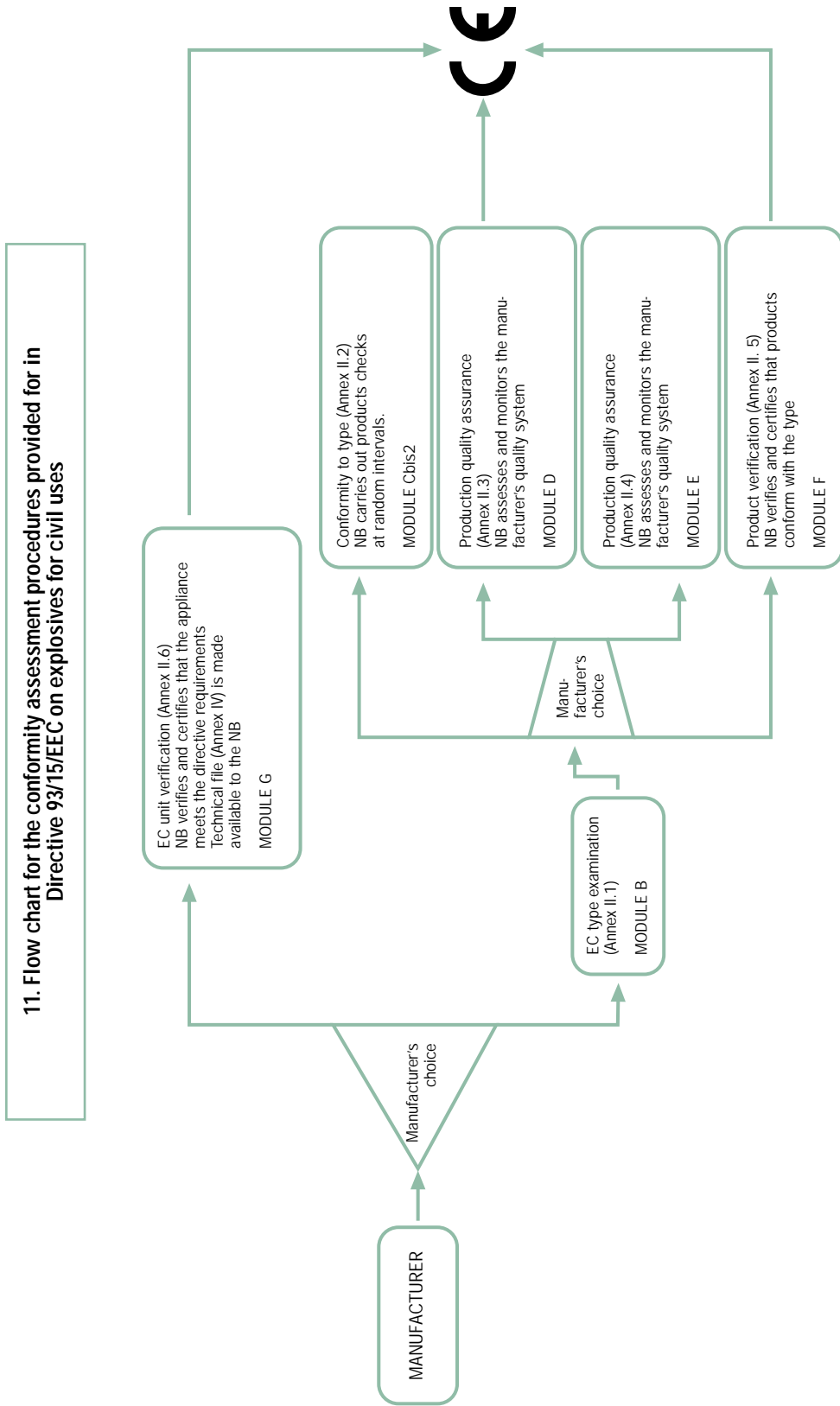
(*) These procedures were approved before the adoption of Council Decision 90/683/EEC (as amended by Decision 93/465/EEC) on conformity assessment procedures (modules). Their provisions may therefore not be identical to those of the modules.

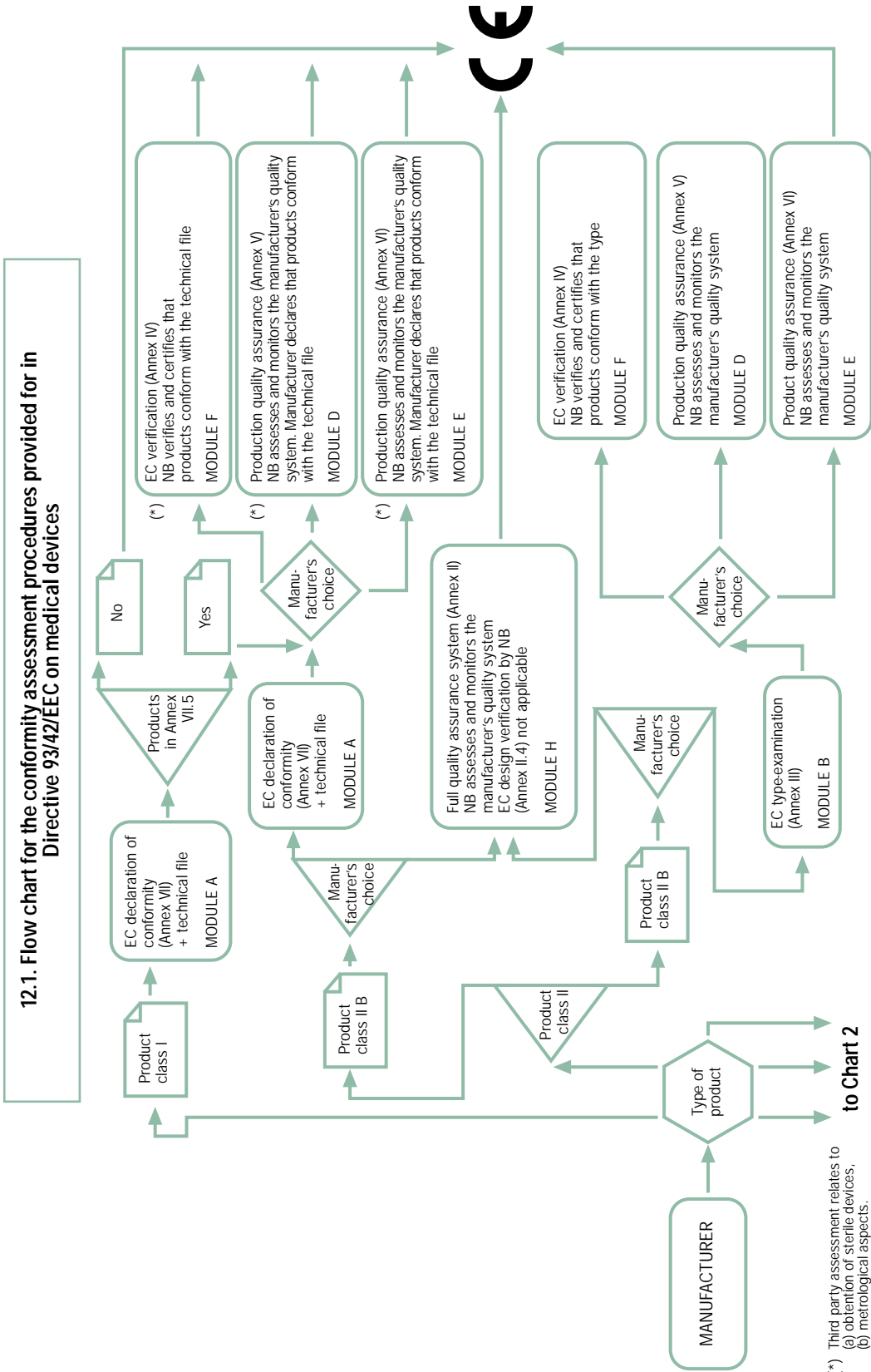


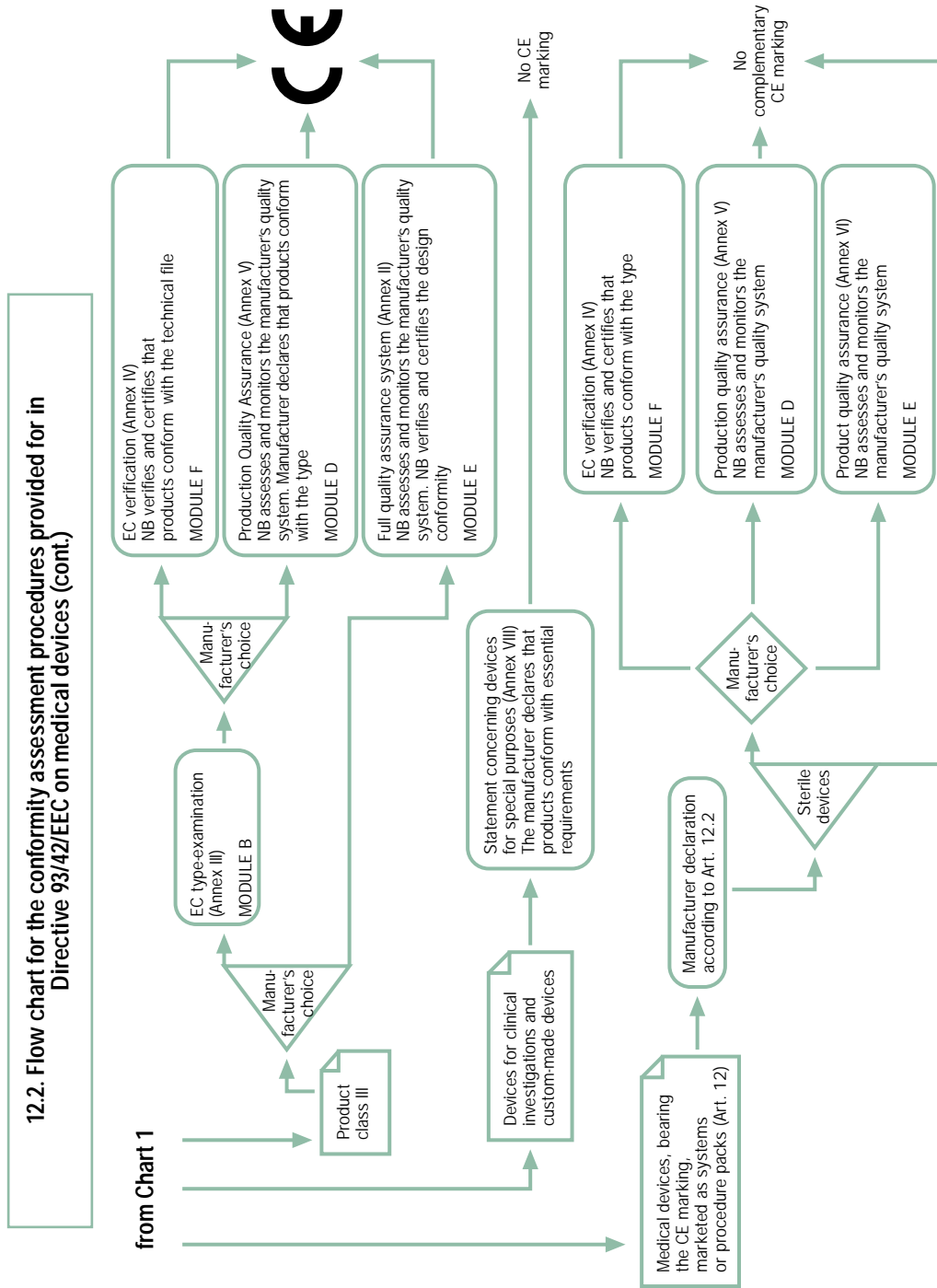
(*) These procedures were approved before the adoption of Council Decision 90/683/EEC (as amended by Decision 93/465/EEC) on conformity assessment procedures (modules). Their provisions may therefore not be identical to those of the modules.

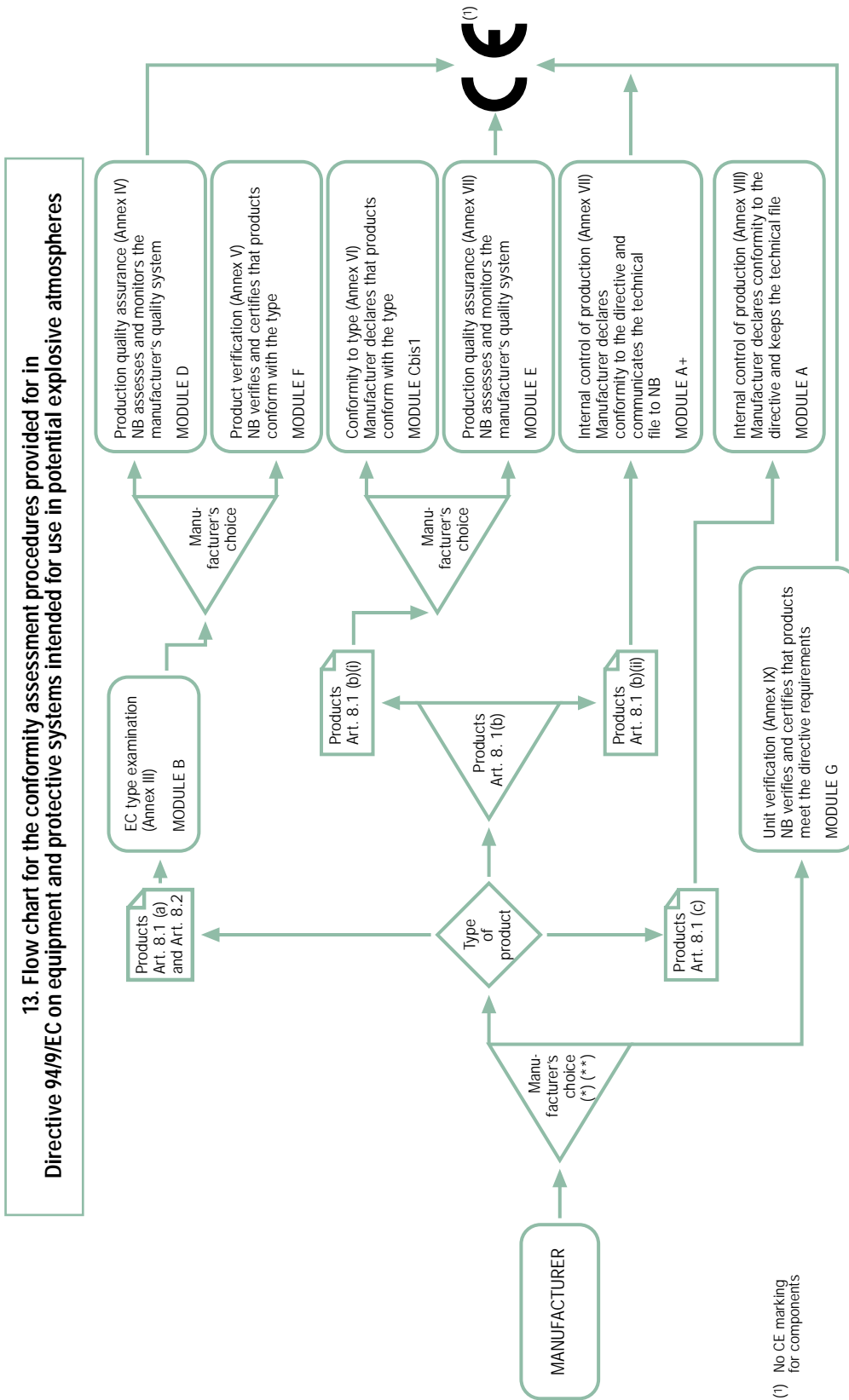


Note: the Directive provides in Article 6 for a label system awarding the boilers energy performances.



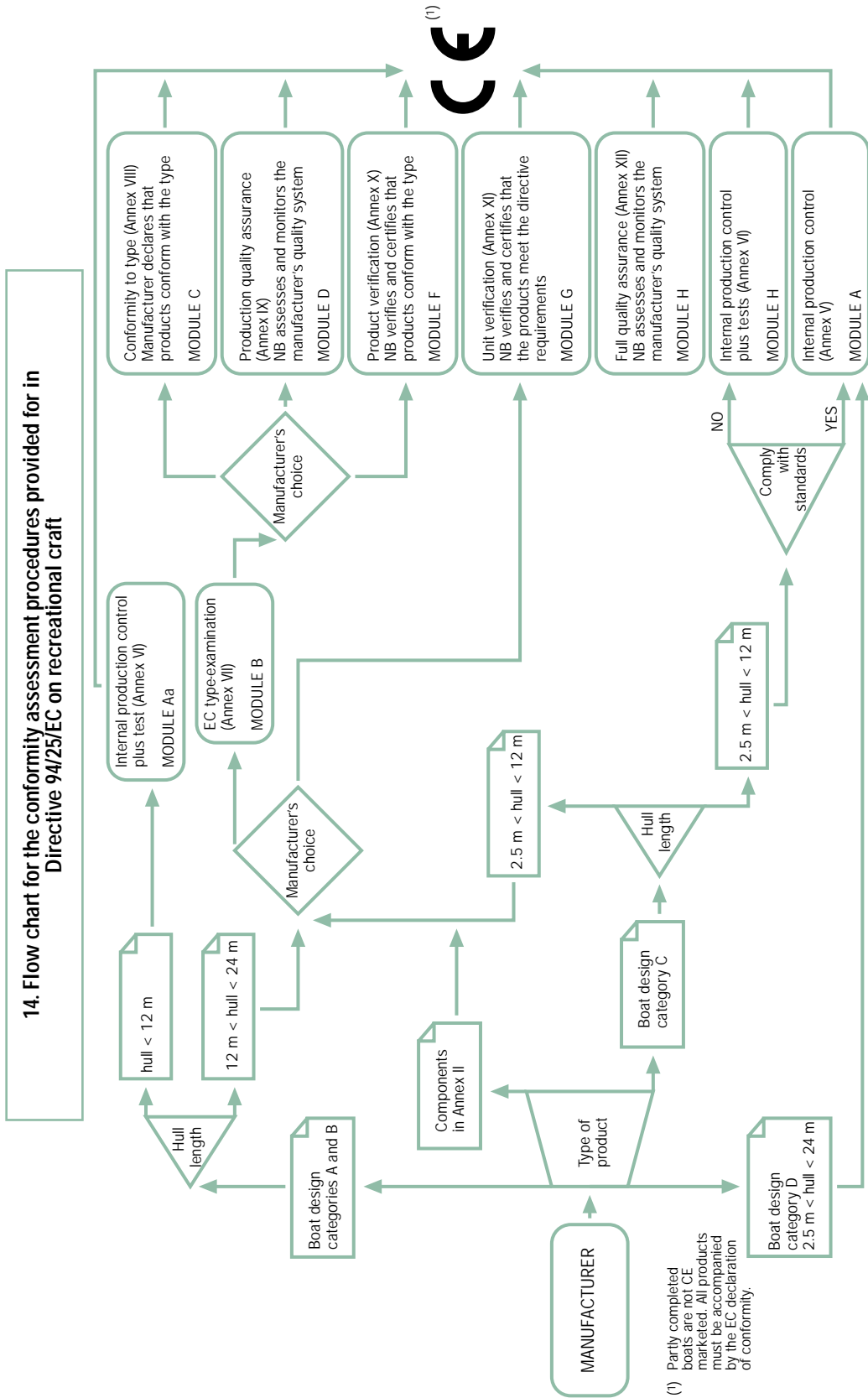


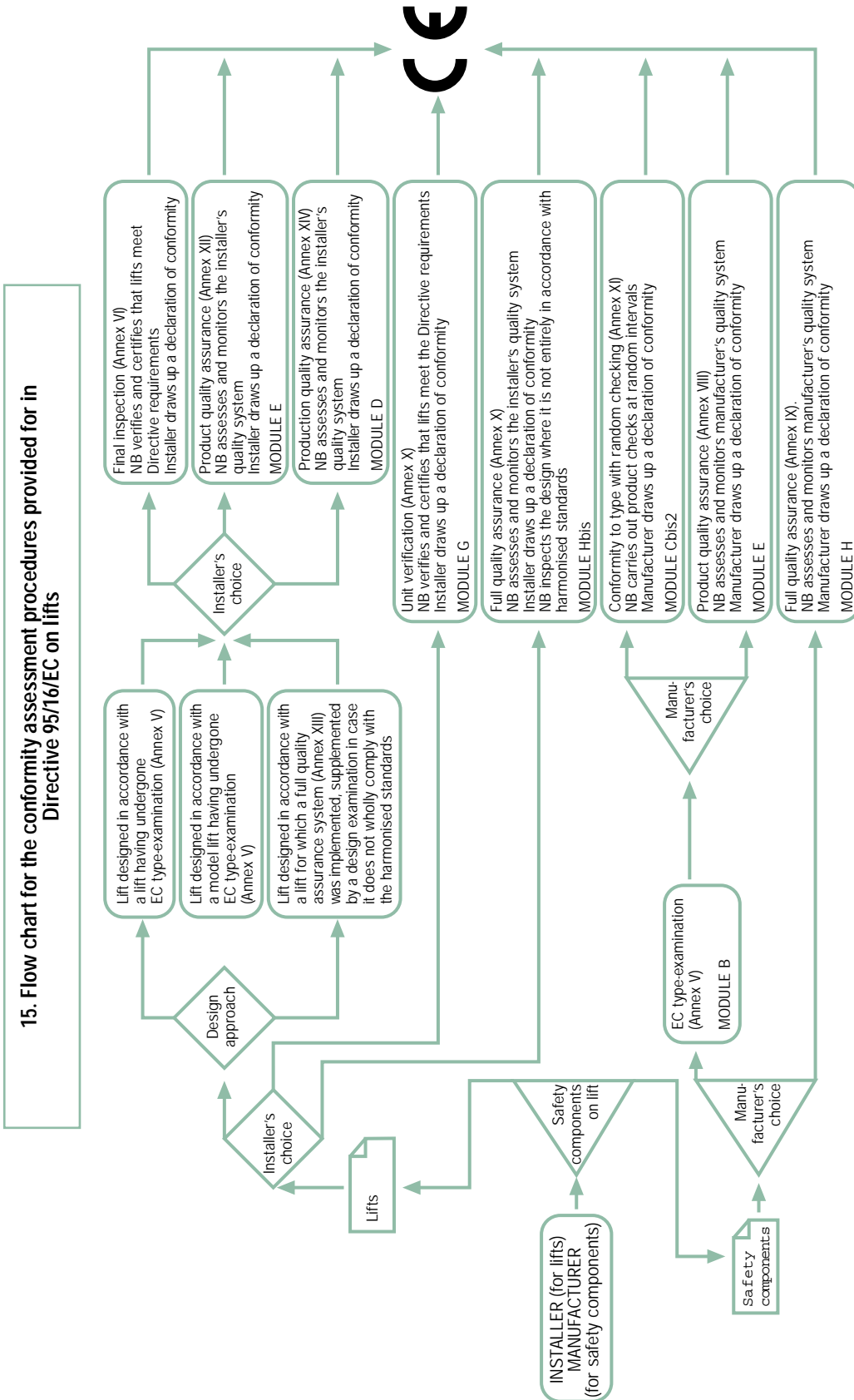




(1) No CE marking for components

(*) All referred procedures shall be applied in respect of components, with the exception of the affixing of the CE marking (Art. 8.3).
 (**) Manufacturer may follow the 'internal control of production' (Annex VIII) procedure with regard to the safety aspects referred to in point 1.2.7 of Annex II to the Directive.





16. Flow chart for the conformity assessment procedures provided for in Directive 96/57/EC on refrigeration appliances



17. Directive 97/23/EC concerning pressure equipment

Type of equipment	Vessels Pressure accessories (1)	Fired or otherwise heated equipment	Piping Pressure accessories (2)	Safety accessories (Annex II, point 2)	Assemblies 'Global procedure' (Art. 10.2)
Fluid to be contained (Art. 9)	gaseous d (3)	liquid n-d (4)	gaseous d	liquid n-d	liquid n-d
Annex II: Tables specific categories as a function of PS, V or DN	1	2	3	4	5
	6	7	8	9	
Category	Applicable procedures (For categories I to IV, the manufacturer must apply one of the modules or one of the module combinations set out in the relevant category)				CE marking
SEP (Sound engineering practice)	See Article 3.3				No
I	A; A1; D1; E1; B1+D; B1+F; B+E; B+C1; H; B+D; B+F; G; H1				Yes
II	A1; D1; E1; B1+D; B1+F; B+E; B+C1; H; B+D; B+F; G; H1				
III	B1+D; B1+F; B+E; B+C1; H; B+D; B+F; G; H1				
IV	B+D; B+F; G; H1				
	In general: Category IV				(a) Each item making up the assembly: according to its category;
	For specific equipment: Category of equipment to be protected				(b) Integration of items: according to the highest category of equipment not considering safety accessories;
					(c) Protection of assembly: highest category of equipment to be protected.
					CE marking (5)

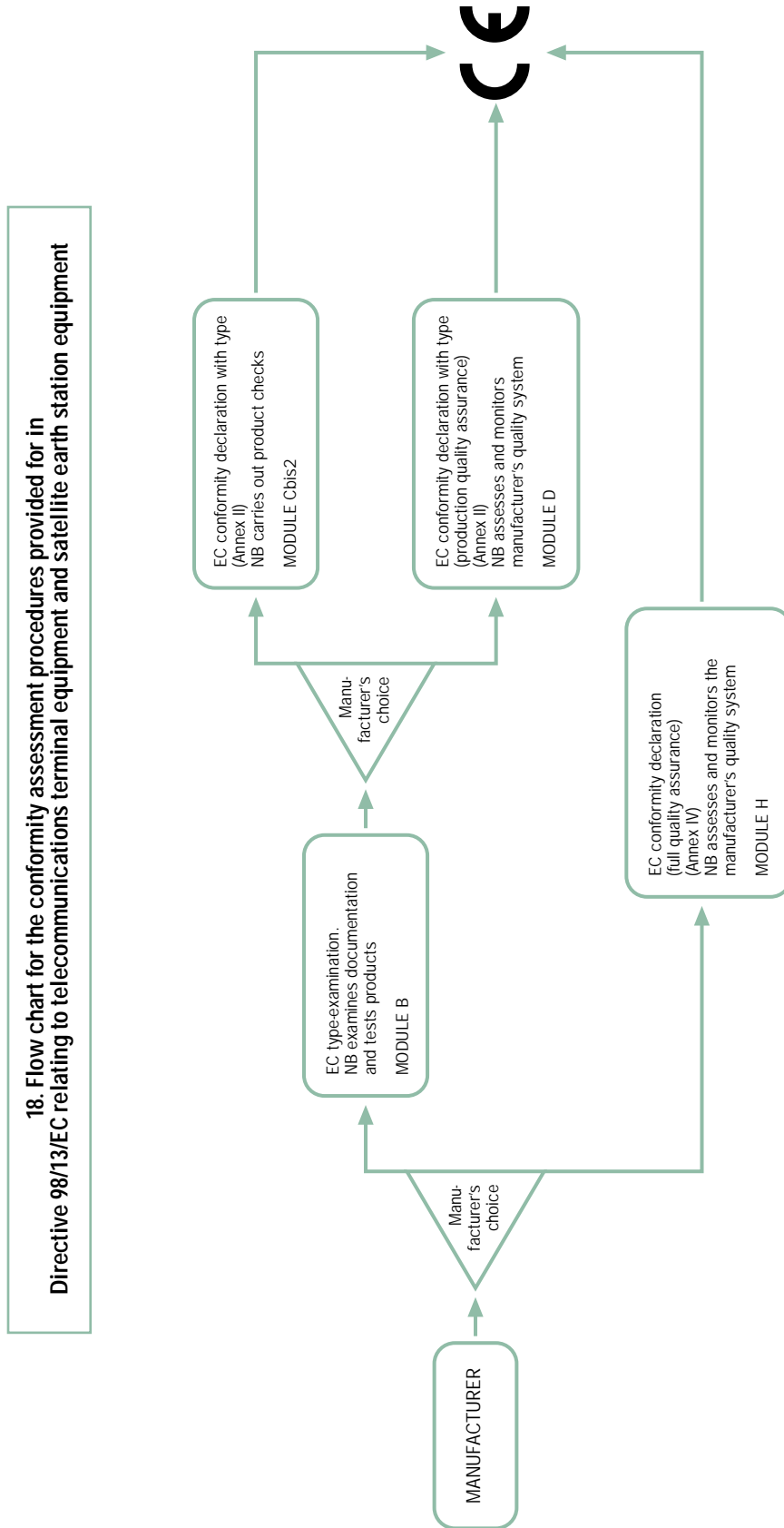
(1) If classified on the basis of PS and V. See Annex II, point 3.

(2) If classified on the basis of PS and DN. See Annex II, point 3.

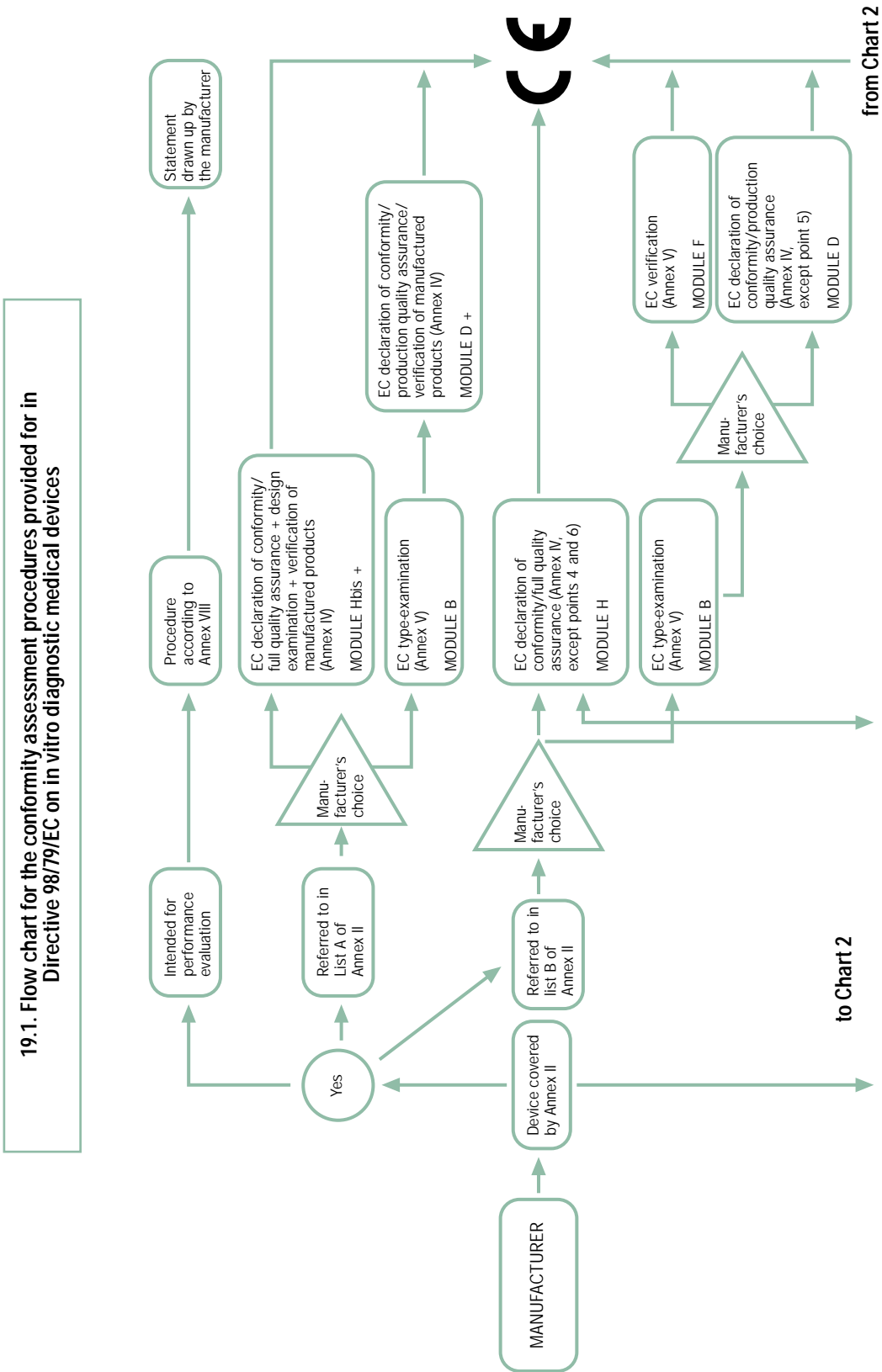
(3) 'd' means dangerous fluid. See Article 9.2.1.

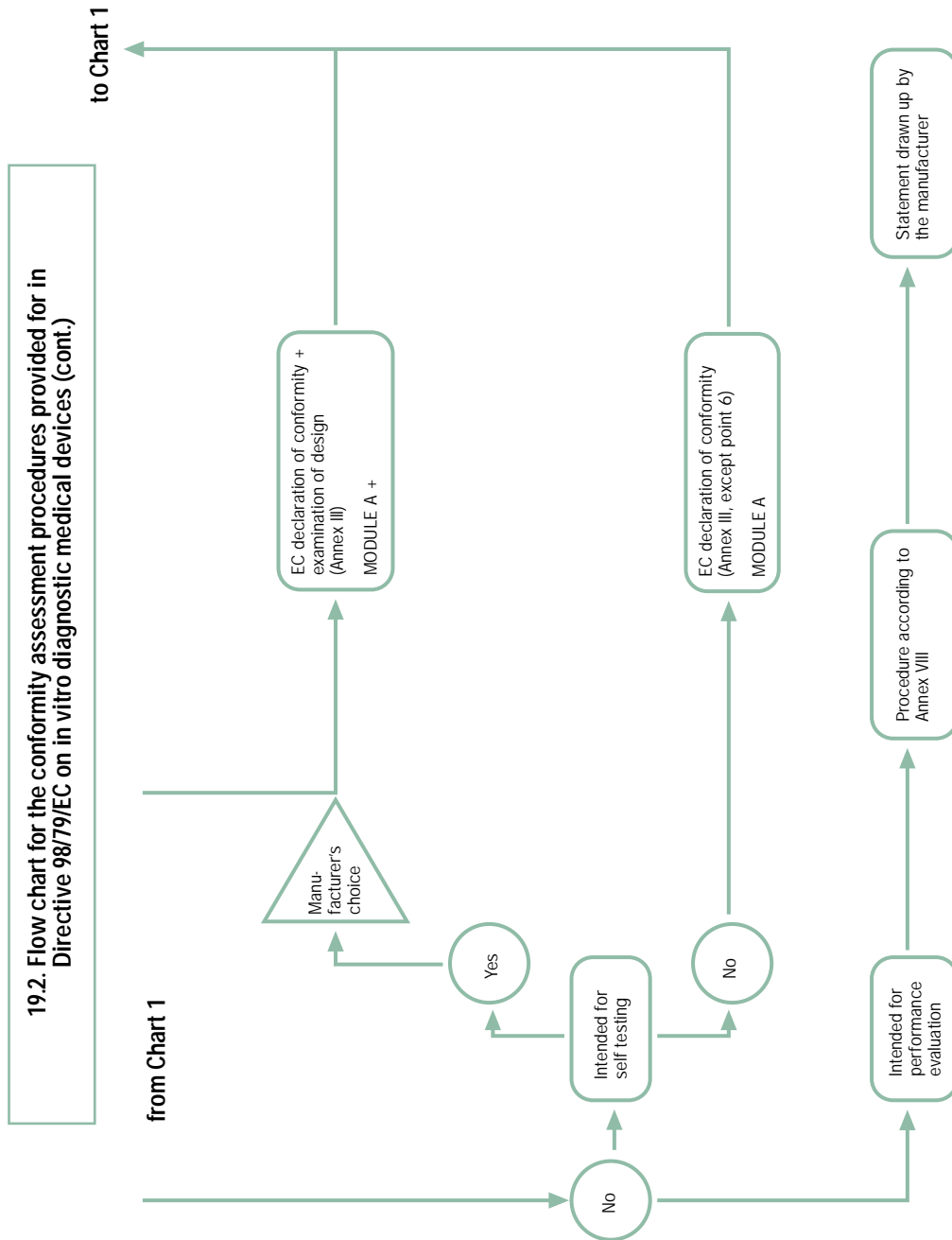
(4) 'n-d' means non-dangerous fluid. See Article 9.2.2.

(5) Within an assembly, CE marking need not be affixed to each individual item of pressure equipment.

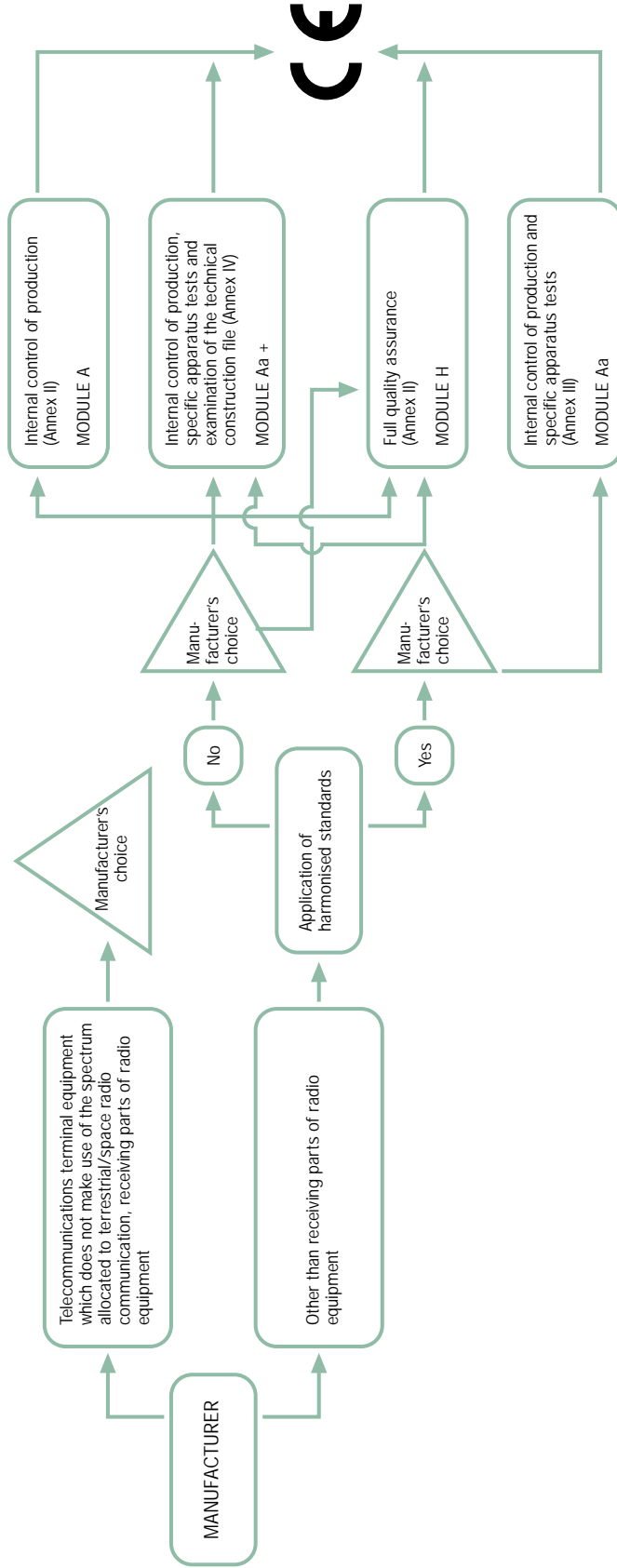


NB: For specific equipment elements the manufacturer of satellite earth station equipment may use the internal production control procedure (Module A, Annex IX) as an alternative to the above conformity assessment procedures.





20. Flow chart for the conformity assessment procedures provided for in Directive 99/5/EC on radio and telecommunications terminal equipment



At the choice of the manufacturer, compliance with the essential requirements may be demonstrated, as an alternative, using the procedures of the Directives relating to low voltage equipment and electromagnetic compatibility respectively, where the apparatus is within the scope of these Directives (see Tables 1 and 4)

